

Customers net price list 2024 (in Euros) from 1.4.2024



Horizontal spirit levels 4020 to 4024

Measuring surfaces flat and prismatically ground, with longitudinal and cross bubble, side view, full heat protection

Length	mm	160	200	250	300	500
Width / Height	mm	42 / 42	42 / 42	42 / 42	42 / 42	44 / 42
Weight of the spirit level	kg	0,98	1,26	1,70	2,12	3,92
Weight of the case	kg	0,40	0,40	0,60	0,62	2,00
Product no. 4020	0.30 mm/m	144,90	171,20	184,40	199,80	394,70
Product no. 4021	0.10 mm/m	158,40	191,60	198,80	225,60	429,60
Product no. 4022	0.04 mm/m	225,60	267,30	304,50	339,50	557,30
Product no. 4023	0.02 mm/m	276,10	332,60	356,30	385,60	627,20
Product no. 4024	0.01 mm/m	-	419,40	441,40	501,10	736,20
Padded plastic case		25,10	25,10	37,10	37,10	87,70

Special versions: with flat base
with magnets
to screw on



Horizontal spirit levels 2K 6080 to 6084 with adjustable longitudinal level

Measuring surfaces flat and prismatically ground, with longitudinal and cross bubble, side view, 2K full heat protection

Length	mm	160	200	250	300	500
Width / Height	mm	42,5 / 44	42,5 / 45,5	42,5 / 47	42,5 / 47	44,5 / 47
Weight of the spirit level	kg	3,97	1,03	1,31	1,75	2,17
Weight of the case	kg	0,40	0,40	0,60	0,62	2,00
Product no. 6080	0.30 mm/m	179,20	212,40	226,10	246,30	462,80
Product no. 6081	0.10 mm/m	192,70	232,80	240,50	271,90	497,90
Product no. 6082	0.04 mm/m	259,50	308,40	346,40	385,90	625,50
Product no. 6083	0.02 mm/m	310,40	373,90	398,00	432,20	695,60
Product no. 6084	0.01 mm/m	-	460,60	483,30	547,70	804,50
Padded plastic case		25,10	25,10	37,10	37,10	87,70

Special versions: with flat base
with magnets
to screw on



Frame spirit levels 4220 to 4224

Measuring surfaces flat and prismatically ground, with longitudinal and cross bubble, side view, full heat protection

Length x Height	mm	100x100	150x150	200x200	300x300
Width	mm	34	42	42	44
Weight of the spirit level	kg	0,86	2,16	3,22	7,10
Weight of the case	kg	0,36	0,40	0,60	2,00
Product no. 4220	0.30 mm/m	257,10	306,90	361,80	572,80
Product no. 4221	0.10 mm/m	319,80	363,40	443,70	727,40
Product no. 4222	0.04 mm/m	406,50	496,80	591,30	873,10
Product no. 4223	0.02 mm/m	535,20	549,30	663,20	911,60
Product no. 4224	0.01 mm/m	-	-	987,00	1240,70
Padded plastic case		26,20	29,90	39,60	93,50

Special versions: with flat base
with magnets

Customers net price list 2024 (in Euros) from 1.4.2024



Crank pin spirit levels 4320 to 4322

Longitudinal and transverse prism measuring surfaces, flat and prismatic, with longitudinal and transverse vial, full heat protection

Length	mm	60	90	120
Width / Height	mm	42 / 42	42 / 42	42 / 42
Weight of the spirit level	kg	0,42	0,64	0,86
Weight of the case	kg	0,26	0,26	0,26
Product no. 4320	0.30 mm/m	-	168,90	190,60
Product no. 4320	0.60 mm/m	154,00	-	-
Product no. 4321	0.10 mm/m	-	189,10	214,00
Product no. 4321	0.20 mm/m	176,00	-	-
Product no. 4322	0.04 mm/m	-	235,20	271,00
Padded plastic case		25,10	25,10	25,10

Special versions:

with flat base
with magnets
to screw on



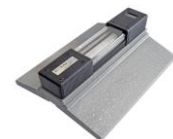
Surface-mounted spirit levels 4460 to 4462

Measuring surface finely ground, with longitudinal bubble, side view, screwable

Length	mm	80	100	150
Width / Height	mm	24 / 24	24 / 24	24 / 24
Weight of the spirit level	kg	0,20	0,26	0,40
Weight of the case	kg	0,24	0,24	0,24
Product no. 4460	0.30 mm/m	116,70	119,00	123,50
Product no. 4461	0.10 mm/m	125,70	128,80	136,70
Product no. 4462	0.04 mm/m	-	-	203,40
Padded plastic case		12,00	12,00	12,00

Special versions:

with magnets



Spirit levels especially wide 4520 to 4523

Measuring surfaces prismatically ground, with longitudinal and cross bubble, side view, full heat protection

Length	mm	160	200	250
Width / Height	mm	140 / 74	160 / 78	200 / 80
min / max diameter	mm	54 / 600	54 / 690	58 / 950
Angle of the measuring	Degree	13°	13°	12°
Weight of the spirit level	kg	3,12	4,04	6,92
Weight of the case	kg	0,56	0,80	1,20
Product no. 4520	0.30 mm/m	869,70	977,70	1218,00
Product no. 4521	0.10 mm/m	1045,70	1143,00	1393,20
Product no. 4522	0.04 mm/m	1196,50	1326,10	1563,00
Product no. 4523	0.02 mm/m	1382,80	1504,00	1742,70
Product no. 4524	0.01 mm/m	-	1590,90	1827,90
Padded plastic case		108,90	114,50	119,80

Special versions:

with magnets

Customers net price list 2024 (in Euros) from 1.4.2024



Spirit levels made of aluminum 4620

Measuring surfaces flat and prismatic, with ground longitudinal bubble, for simple measurements

Length	mm	100	150	200	250	300
Width / Height	mm	22 / 22	22 / 22	22 / 22	22 / 22	22 / 22
Weight of the spirit level	kg	0,08	0,12	0,16	0,20	0,24
Weight of the case	kg	0,05	0,05	0,05	0,05	0,05
Product no. 4620	0.60 mm/m	52,80	58,10	65,70	81,10	94,60
Padded plastic case		inkl.	inkl.	inkl.	inkl.	inkl.



Spirit levels made of aluminum 4640 to 4641

Measuring surface flat, with ground longitudinal bubble, side view, screwable

Length	mm	80
Width / Height	mm	16 / 16
Weight of the spirit level	kg	0,04
Weight of the case	kg	0,05
Product no. 4640	0.40 mm/m	113,20
Product no. 4641	0.10 mm/m	118,60
Padded plastic case		7,30



Degree spirit level 4730

Measuring surface, flat ground, reading 1 degree, for simple measurements, screwable

Length	mm	300
Width / Height	mm	25 / 95
Weight of the spirit level	kg	1,06
Weight of the case	kg	0,56
Product no. 4730	1 degree	281,60
Padded plastic case		31,40

Special versions: with magnets



2-axis disc spirit levels 4830 to 4860

Measuring surfaces finely ground, 2 ground longitudinal vials, side view, rustproof, screwable

Diameter	mm	60	80
Height	mm	14	17
Material		14CrMoS17	14CrMoS17
Weight of the spirit level	kg	0,42	0,42
Weight of the case	kg	-	0,50
Product no. 4830	0.60 mm/m	-	383,00
Product no. 4831	0.30 mm/m	-	463,10
Product no. 4860	0.30 mm/m	209,20	-
Padded plastic case		-	incl.

Special versions: with magnets
Suitable accessories for 483x: Measuring Plate
Measuring Stands

Customers net price list 2024 (in Euros) from 1.4.2024



Cross spirit level 4960 to 4964

Measuring surfaces flat and prismatic, with ground longitudinal bubble, for simple measurements

Length	mm	150
Width / Height	mm	150 / 33
Weight of the spirit level	kg	1,26
Weight of the case	kg	0,40
Product no. 4960	0.30 mm/m	397,50
Product no. 4960	0.10 mm/m	418,70
Product no. 4961	0.04 mm/m	523,80
Product no. 4962	0.02 mm/m	603,20
Product no. 4963	0.01 mm/m	739,40
Padded plastic case		29,90



MICROLEVEL electronic horizontal spirit level 5023 to 5025

Measuring surfaces flat and prismatically ground, longitudinal and transverse inclination, full heat protection

Length	mm	160	200
Width / Height	mm	42 / 47	42 / 47
Weight of the spirit level	kg	0,94	1,24
Weight of the case	kg	0,72	0,72
Product no. 5023	0.02 mm/m	2290,00	2290,00
Product no. 5024	0.01 mm/m	2690,00	2690,00
Product no. 5025	0.005 mm/m	3090,00	3090,00
Padded plastic case		incl.	incl.

Special versions:

with flat base
with magnets



MICROLEVEL electronic frame spirit level 5223 to 5225

Measuring surfaces flat and prismatically ground, longitudinal and transverse inclination, full heat protection

Length / Height	mm	150 x 150
Width	mm	42
Weight of the spirit level	kg	2,22
Weight of the case	kg	1,04
Product no. 5223	0.02 mm/m	2450,00
Product no. 5224	0.01 mm/m	2850,00
Product no. 5225	0.005 mm/m	3250,00
Padded plastic case		incl.

Special versions:

with flat base
with magnets

Customers net price list 2024 (in Euros) from 1.4.2024



MICROLEVEL electronic horizontal spirit level 5523 to 5525

Measuring surfaces prismatically ground, with longitudinal and cross bubble, side view, full heat protection

		160	200
Length	mm	160	200
Width / Height	mm	140 / 79	160 / 83
min / max diameter	mm	54 / 600	54 / 690
Angle of the measuring	Degree	13°	13°
Weight of the spirit level	kg	3,08	4,10
Weight of the case	kg	0,56	0,80
Product no. 5523	0.02 mm/m	3330,00	3330,00
Product no. 5524	0.01 mm/m	3730,00	3730,00
Product no. 5525	0.005 mm/m	4130,00	4130,00
Padded plastic case		incl.	incl.

Special versions:

with flat base
 with magnets

Declaration of Type Designations

Example:

4 0 2 0 / 1 6 0 / KK

1. Position: Measuring method

- 4 = Precision-Level mechanical
- 5 = Precision-Level electrical
- 6 = Precision-Level mechanical, 2 Component-Version

2. Position: Level Type

- 0 = Horizontal-Level
- 2 = Square Type-Level
- 3 = Crank Pin-Level
- 4 = Brench Type-Level
- 5 = Precision Level with specially broad prism
- 6 = Aluminium-Level
- 7 = Spirit Level for checking any inclination
- 8 = 2-Axis Level, wheel shape
- 9 = 2-Axis Level, cross shape

3. Position: Model

- 2 = prismatic and flat base
- 3 = flat base
- 6 = mountable
- 7 = 3-Point base
- 8 = adjustable vial

4. Position: Accuracy

- 0 = 0,3 mm/m ¹⁾
- 1 = 0,1 mm/m ²⁾
- 2 = 0,04 mm/m
- 3 = 0,02 mm/m
- 4 = 0,01 mm/m
- 5 = 0,005 mm/m
- 6 = 0,001 mm/m

6.-8. Position: Length

Length in mm

10.-11. Position: Case

- KK = in plastic case
- HK = in wooden case
- further positions for special models

The Accuracy is indicated at every level

Pricing: Ex works, excluding packaging + VAT

Payment terms: 10 days 2% discount, 30 days net

Repairs: immediately net

1) 0.6 mm/m for crank pin-levels with length 60 mm and wheel shape-levels with diameter 80 mm, 0.6 or 0.4 mm/m for aluminium levels

2) 0.2 mm/m for crank pin-levels with length 60 mm